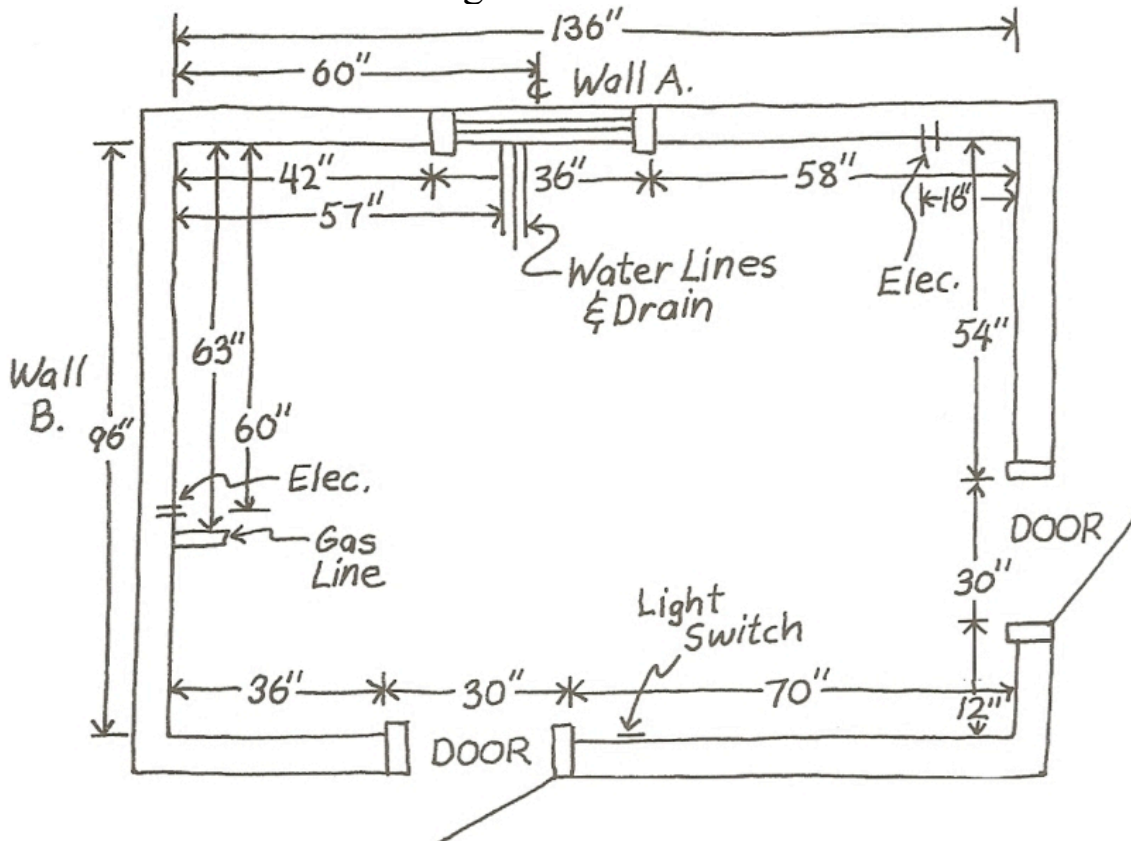




How To Measure Guide

Measuring for Your New Cabinets

Accurate measurements are essential to your kitchen cabinets fitting properly into your dream kitchen. Before any planning can begin, The Kitchen Cabinet Kings needs the exact dimensions available for kitchen cabinet installation. Look at the drawing below enlarged view of what your own floor plan should look like. Please use the digital graph paper provided. You can either print it out and draw on it by hand, or use a graphical editor such as MSPaint, Photoshop or the free and open source GIMP to do the drawing. When the sketch is complete, use our easy to follow process and attach it to one of our forms located in the design center.





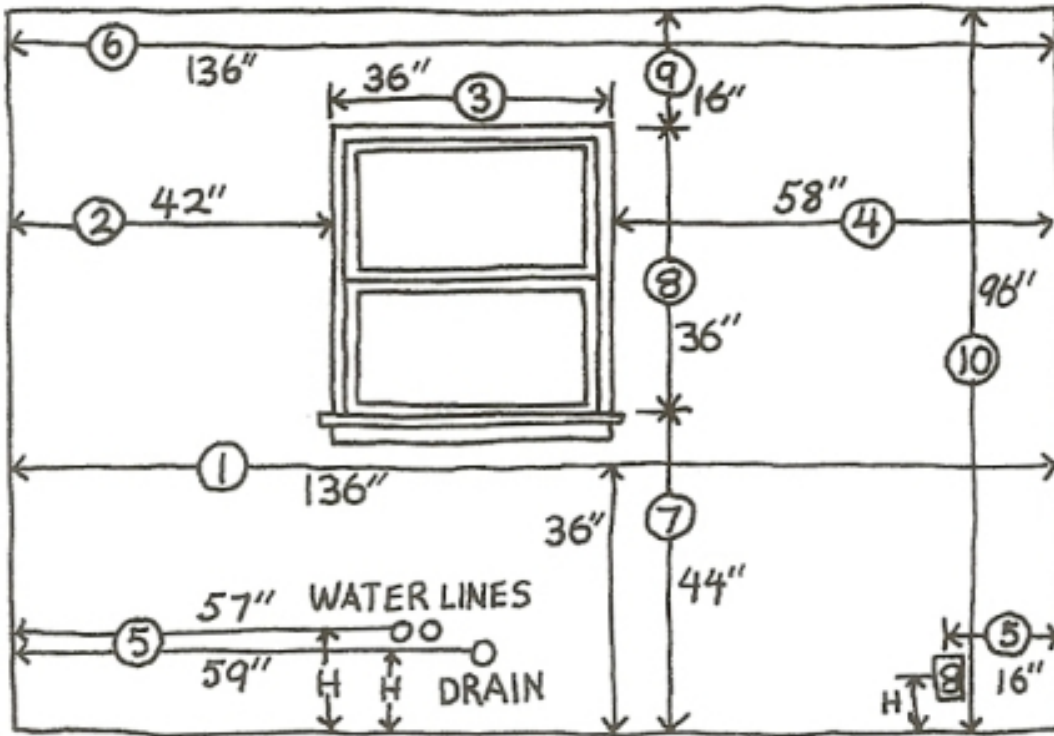
Please measure according to the drawings on page three.

Horizontal Measurements

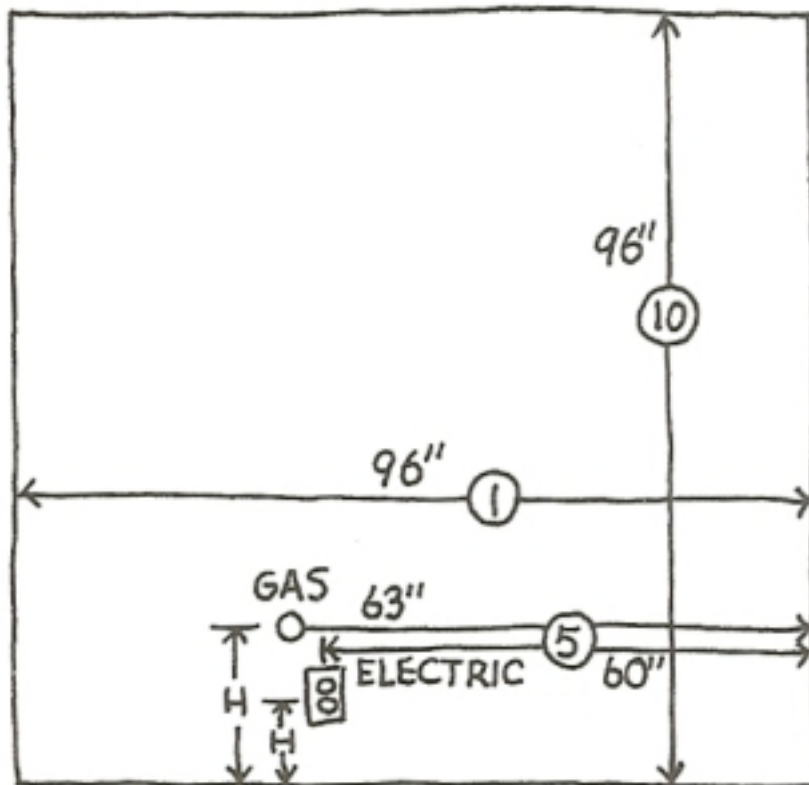
1. Measure from one wall to the other at a 36" height
2. Measure from the corner to the window or door opening
3. Measure across the outside edges of the trim on door or window opening
4. Measure from edge of trim to far wall. Compare the measurements of steps 2, 3, and 4 to measurement from Step 1
5. Mark the exact location of water, drain, gas lines, and electrical outlets and switches on the drawing
6. Measure from wall to wall again, but above the window this time

Vertical Measurements

7. Measure from the floor to the window sill
8. Measure from the window sill to the top of the window
9. Measure from the top of the window to the ceiling
10. Measure from floor to ceiling and compare this number with the sum of steps 7, 8, and 9.



WALL A.



WALL B.

